

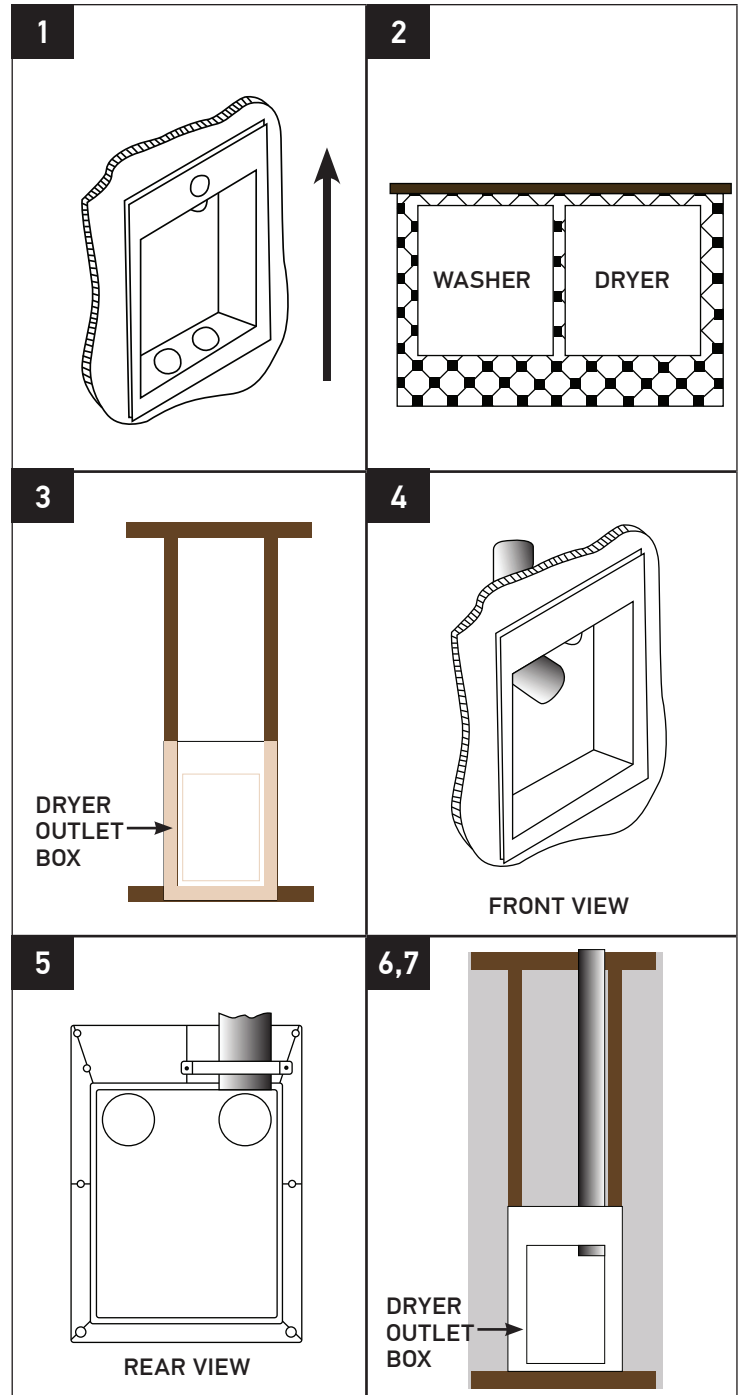
Installation Instructions

Dryer Vent Outlet Box

This dryer outlet box (18" wide x 24" tall) is designed to fit standard 16" center stud construction which uses 2x4's or 2x6's. The standard 4" diameter knockouts provide full airflow and the six most common positions are pre-scored to make punch-out quicker. The pre-scored plastic can be cut with a sturdy pocket-knife. Additional knockouts may require a utility knife.

INSTALLATION INSTRUCTIONS

1. Orient box with largest flange of face plate at top. (House logo is on this flange.)
2. Place box on floor. Choose studs which are centered in area dryer will be placed. (Center washing machine outlet box approximately 36" off the floor. Center the dryer vent outlet box flush with the floor.) The box is made to fit standard 16" center construction.
3. With box on the floor, use 6 screws (#10 - 2Yi" wood screws recommended) inserted into indentions provided to secure box to studs. Do not completely secure box. Leave room between box and studs for dry-wall. Hand tighten just enough to hold the box in position.
4. Install standard 4" diameter metal venting, as specified by the building codes. (This is most easily done before the back-wall is installed.)
5. For top venting, we recommend you use standard strapping to secure the pipe to the box. Use 2 screws (#10 - Yi" sheet metal screws recommended) to secure strapping to mounting holes provided on each side of knockouts.
6. At this time, the dry wall can be installed. Slide the drywall behind the face-plate sections. It will fit between the face-plate and the studs and butt up against the standoffs.
7. After the drywall is installed, tighten the screws on the dryer outlet box. This will pull the face plate up against the dry wall for a neat clean trim.



CONTACT US FOR MORE INFORMATION:

1.604.881.7875 | info@primexvents.com

09/18



primex
primexvents.com